

# we create connections

# Mission

Since **1964** we design and develop terminals, connectors, connection technologies and machines for electric connections. All processes are implemented internally by a continuous innovation in order to guarantee the quality of our products and the growth of know-how.

Our commitment is always addressed to face and solve our customers' needs in order to propose them *solutions* and not simple products. We invest on average more than **10%** of our turnover in new products and technologies. We believe in innovation.

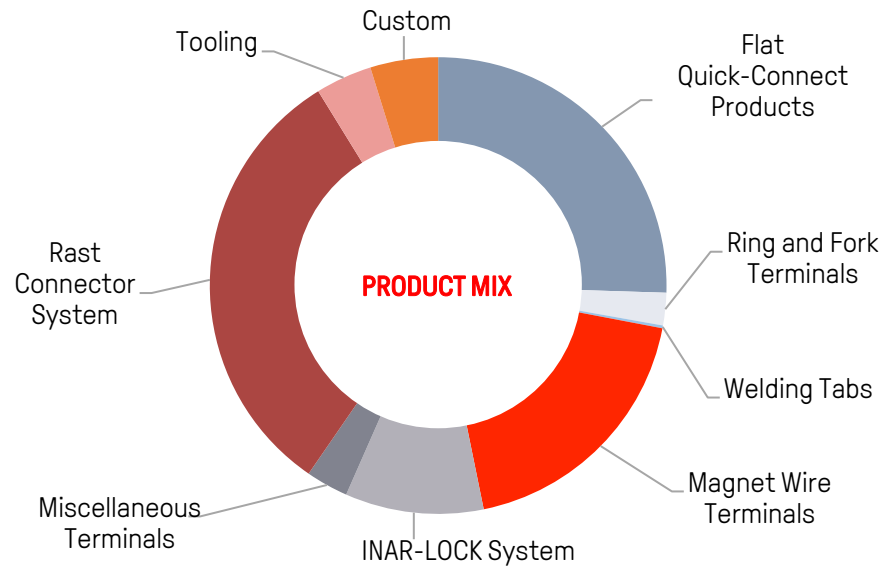
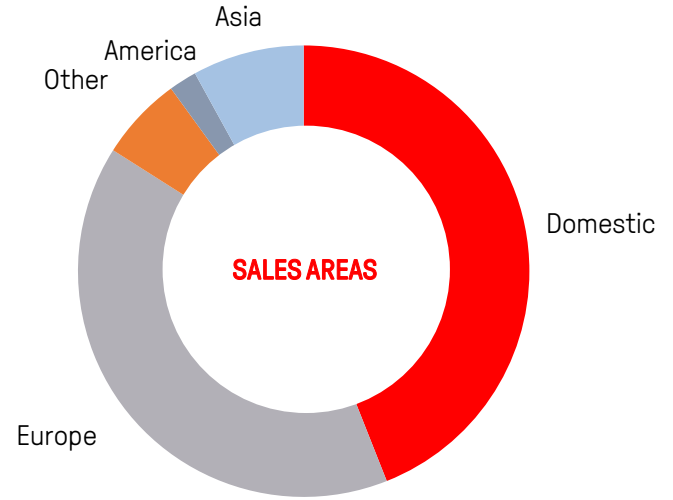
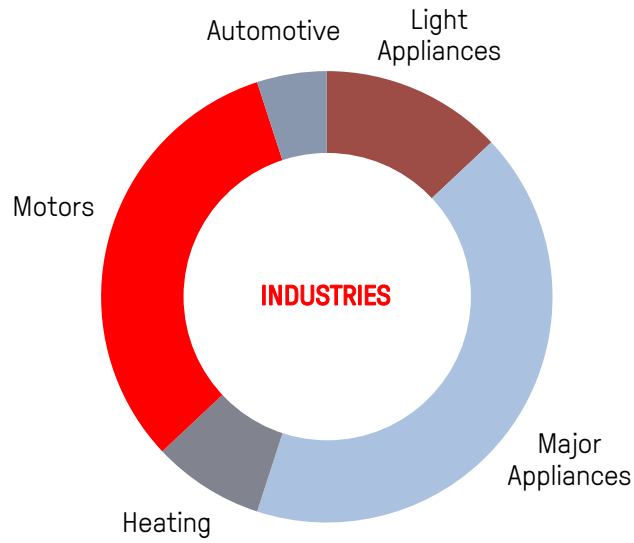






# Key facts

Uncovered surface:	35.804 m <sup>2</sup>
Covered surface:	18.500 m <sup>2</sup>
Employed people:	130
Revenues from sales and services:	40.070.969 €
Employee training:	15.000 h
Patents:	200 <sup>+</sup>





# Products

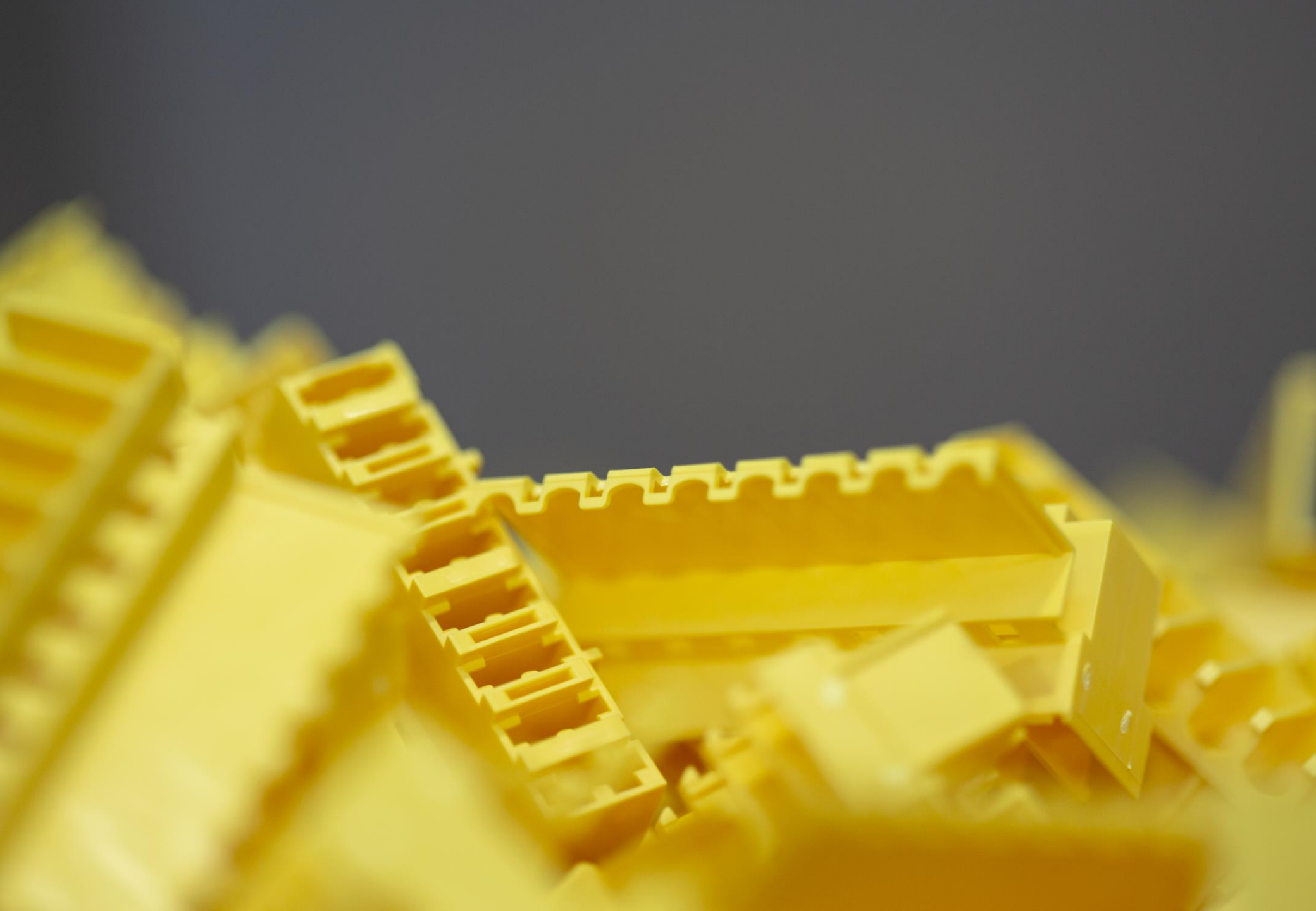
- Tab and Receptacles terminals and connectors
- Eyelet and fork terminals
- Tab and solder terminals
- INAR-SPLICE and SPLICE VAR Terminals and Connectors for Magnet Wire
- Terminals and Connectors for special applications
- INAR-RS technology Terminals and Connectors for Magnet Wire
- INAR-RS MATE technology Terminals and Connectors for Magnet Wire
- INAR-MINILOCK terminals and connectors for multiple connections
- INAR-LOCK terminals and connectors for multiple connections
- INAR-EDGE terminals and connectors for Wire to Board applications
- INAR-TC terminals and connectors for Rast 5
- INAR-SAFETY security terminals and connectors
- INAR-LIF terminals and connectors Low Insertion Force
- INAR-IDC insulation displacement connectors
- Application tooling





# The quality manifesto

- Continuous improvement toward perfection
- Design implementation
- Top quality raw material
- High quality tools workshop
- High quality production process
- 100% checking with optical system on the production line
- Years of know-how and high expertise level
- Target: **No defects!**



# Quality Certifications

- In 1994 the Company achieved ISO 9001 certification
- In 2006 the Company is ISO 14001 certified
- In 2015 the Company obtained ISO/TS 16949 (now IATF 16949) standard
- Many Inarca product have been certified from International Organizations such as: UL (U.S.A.), VDE (Germany), CSA (Canada).

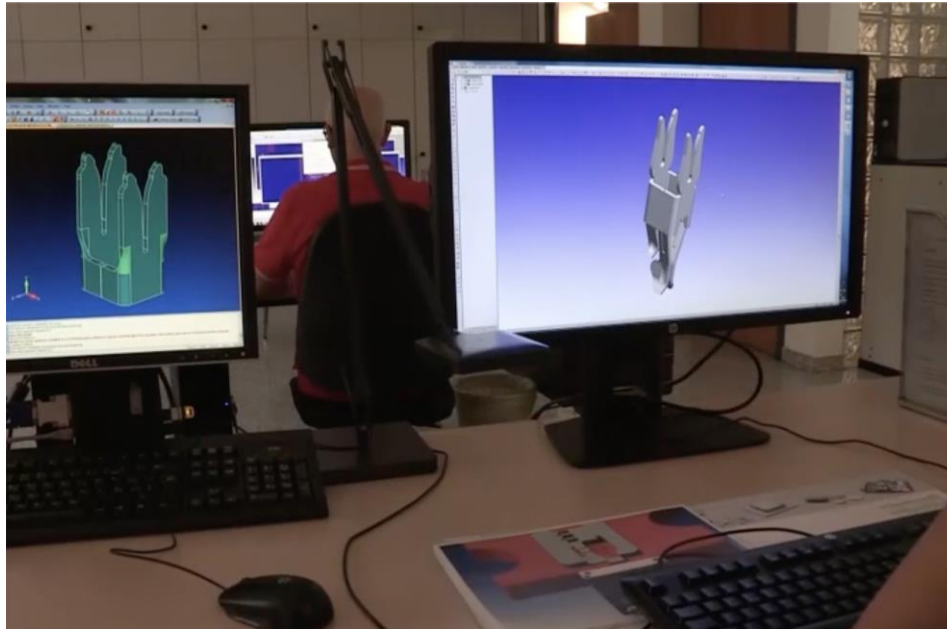
# Departments

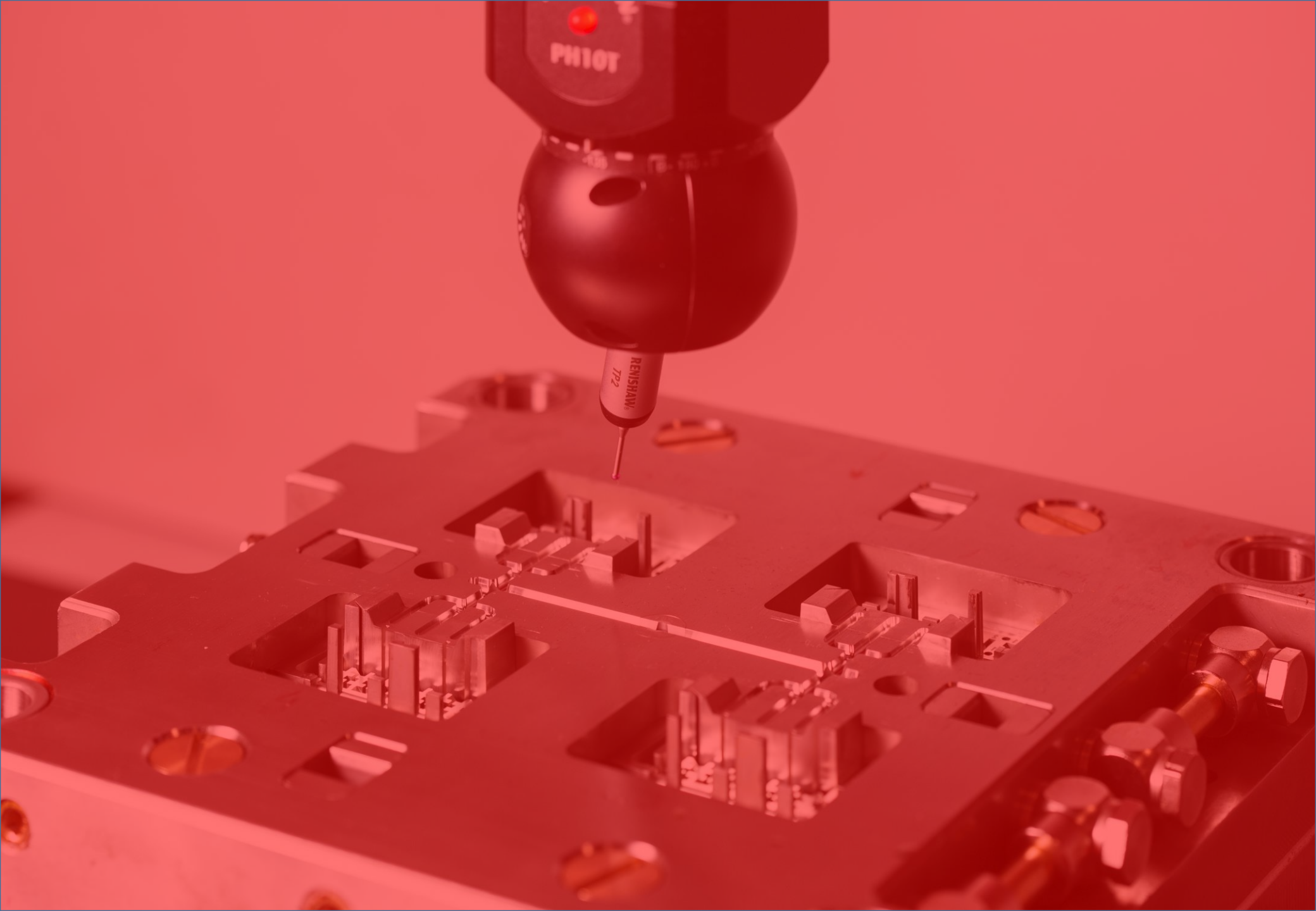
1. Research & Development
2. Tooling workshop
3. Stamping
4. Moulding
5. Galvanic and plating
6. Laboratory and controls
7. Warehouse



# Research & Development

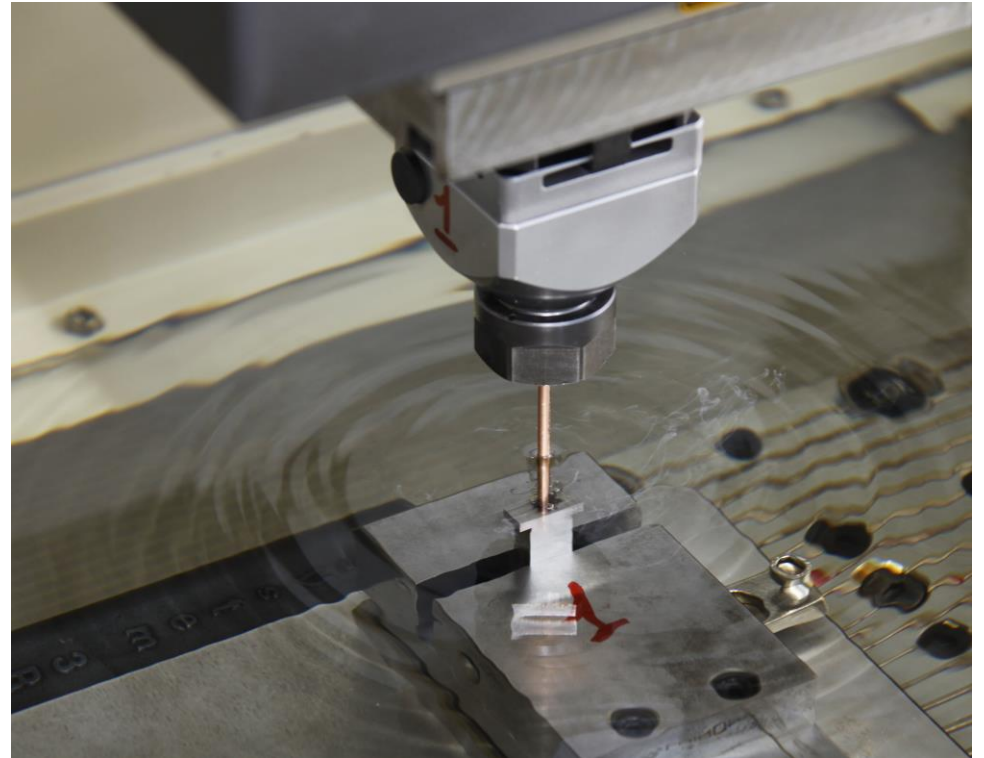
A team of experts and professional engineers.  
Their mission is to improve products, develop new product lines  
and assist our customers in new projects.





# Tooling workshop

We manufacture all tools ourselves (dies, moulds and machine components) with a significative advantage in term of control, customization, quality and performance.





# Stamping

All the progressive dies are internally fabricated and all the lines works with Bruderer presses. The optical control system and the full automation, guarantees incomparable final results.

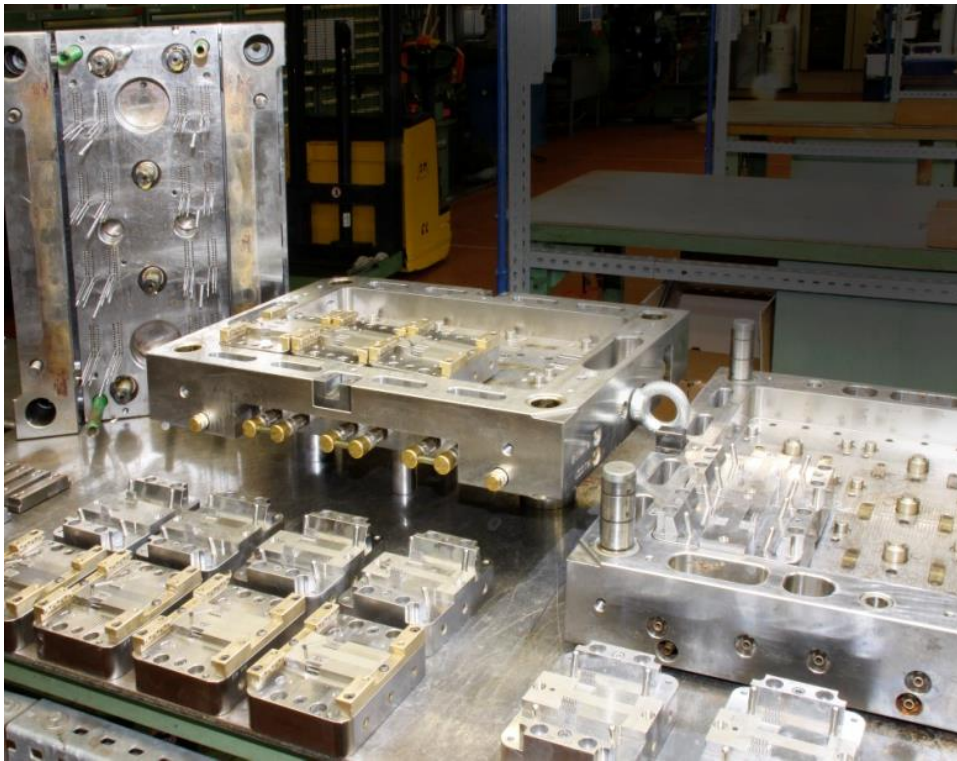






# Moulding

The plastic moulds are manufactured in Inarca and all the press machines are power supplied. The production is automated with a latest injection technologies system.





# Galvanic and Plating

Internal Galvanic and Plating departments are the logical sequence in stamping production. These systems work respecting the environment. Sustainability has always been a priority for us.

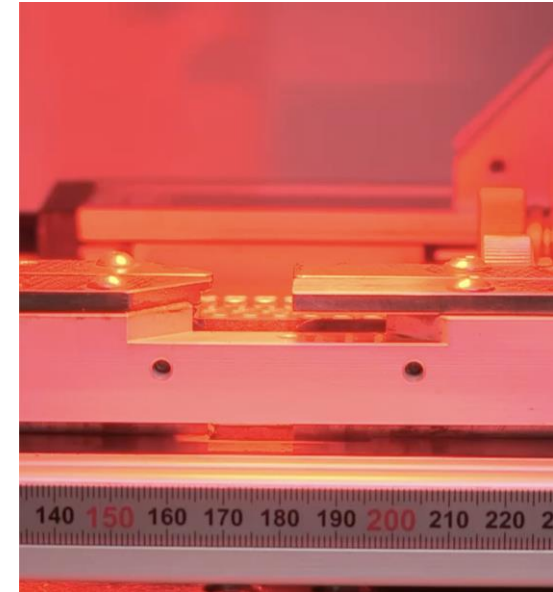
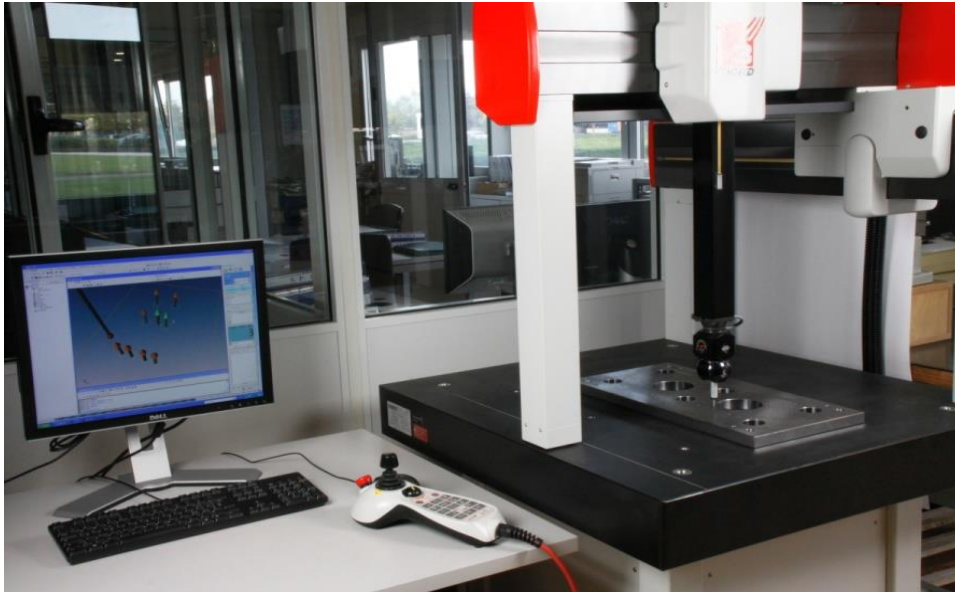






# Laboratory and Controls

Strict procedures of quality controls with a full range of tools and many years of experience. We care about quality.

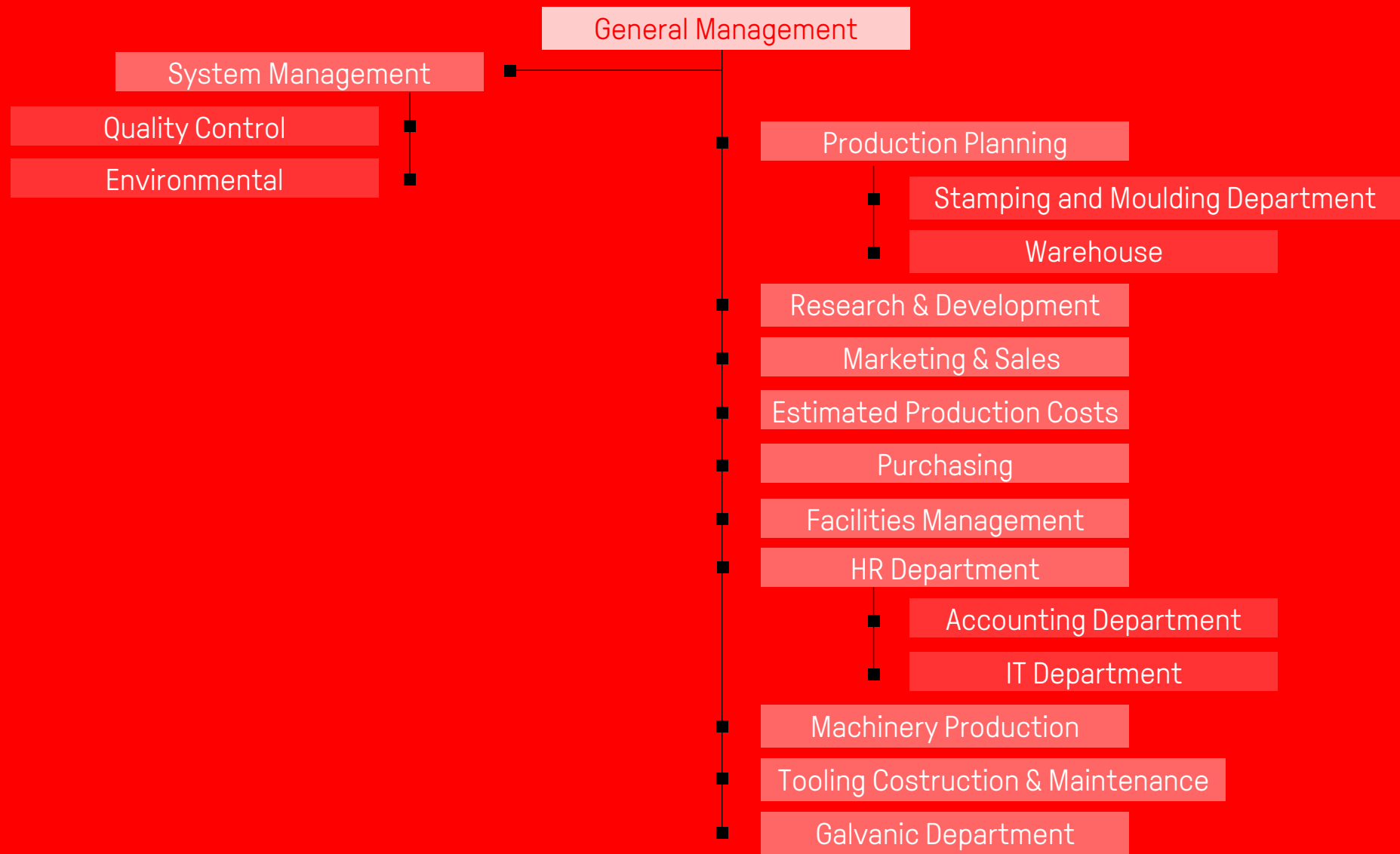


# Warehouse

The logistic department is fully automatized.  
This system has allowed us to minimize space and time  
and maximize the delivery process.



# Organization chart



# Some Of Our Customers

AEG Electrolux  
Ariston Thermo  
Amica  
Ametek  
Askoll  
Baxi  
Becker  
Bitron  
BDR Thermea  
Black & Decker  
Bontanz-Centre  
Borg Warner  
B/S/H  
Candy  
Carel  
Copreci  
Came  
DAB  
DeLonghi  
Denso

Domel  
Ducati Energia SPA  
EBM PAPST  
Electrolux  
Elica  
Eliwell  
Embraco  
Emerson  
Faber  
Franke  
Gorenje  
Hidria  
Hoover  
Immergas  
Intorq  
ITT  
Johnson Motors  
Kärcher  
Kemet  
Kendrion

LEM  
Lexy - Kingclean  
Liebherr  
Logicdata  
Mabuchi  
Magna  
Mahle  
Mes  
Miele  
Nidec Global Appliance  
Nidec Motors & Actuators  
Nidec GPM  
Pedrollo  
Pentair  
Peg Perego  
Quooker  
Rosenberg  
Robert Shaw  
Robert Bosch  
Saeco

Sanhua Aweco  
Sew Usocome  
Secop  
Siemens  
Sisme  
Silanos  
SKF  
Smeg  
Somfy  
Sonceboz  
Taco  
Unox  
Vaillant  
Viessmann  
Vortice  
Vorwerk  
Wahl Clipper  
Whirlpool  
Xylem  
Zoppas Industries

Thank you.